

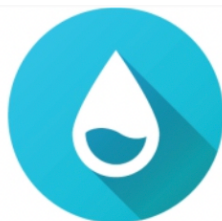
ENVIROPRO

Multi-layered Soil Moisture, Temperature
& EC Sensor



IDENTIFY TRENDS

EnviroPro® soil sensors allow growers to collect data over long periods, enabling them to make informed decisions based on trends and historical events. Each sensor is factory calibrated to ensure life-time sensor to sensor and probe to probe repeatability.



CONSERVE WATER

Save on our most precious resource, water. With the ability to test soil moisture levels at root level, EnviroPro® capacitance probes will give you the power to know when to irrigate, and how much water your crops require.



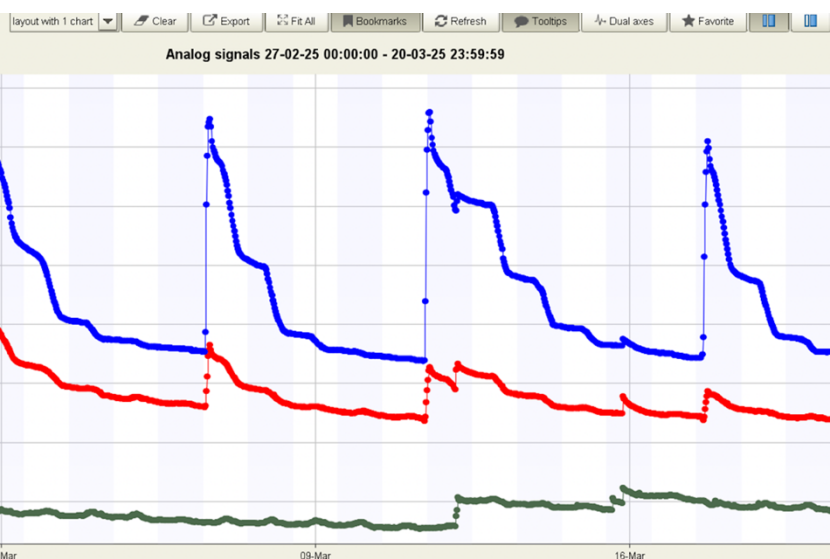
SAVE TIME

Manually sampling soil for testing or lab analysis takes time and money. EnviroPro® enables quick and easy access, any time, to information about the soil while reducing the need to travel into paddocks to conduct soil testing.



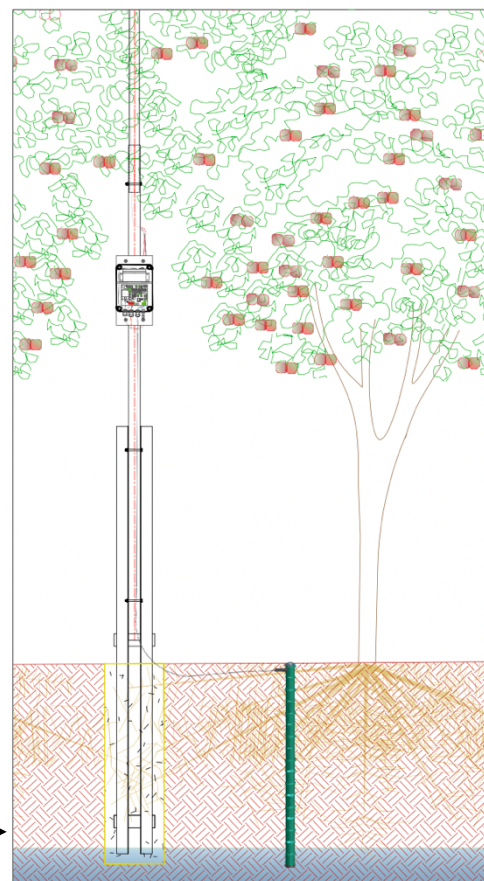
IMPROVE YIELDS

EnviroPro® is ground-breaking technology that can facilitate better quality produce and higher yields by providing an insight into underground conditions at the root zone, and thus enabling the optimisation of fertilisers, energy, irrigation and water use.



The graph above is extracted from the **EnviroPro** probe which is a 80cm length sensor, which has the ability to measure every 10cm of soil depth. Above you can see the 20cm, 30cm and 40cm reporting moisture back to the Dream Controller via G5 radio RTU.

Typical **EnviroPro** installation in an orchard next to a Radio RTU





GOLDTEC

CONTROL SYSTEMS



Website: <https://goldtecsystems.com.au/>



Facebook: @Goldtec Control Systems



LinkedIn: @Goldtec Control Systems

