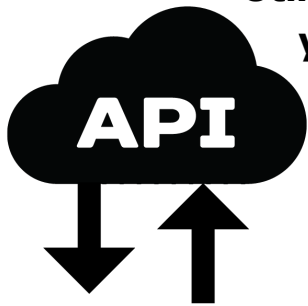


VISION 2

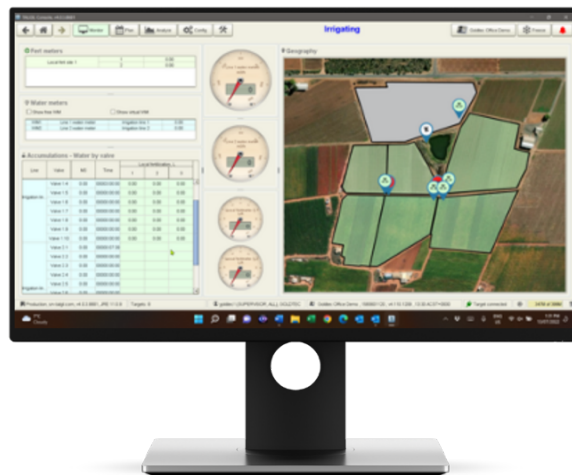
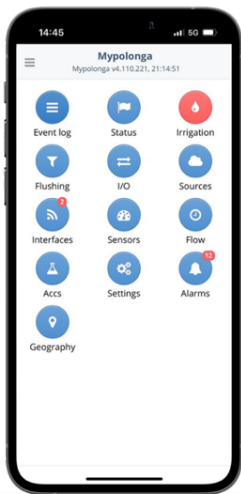
A versatile internet enabled Irrigation Controller and supervisory system



Utilizing the most advanced technology Goldtec is now offering you the **VISION 2**



It is an **Internet enabled controller** so the user can control everything from a **PC or Smartphone**.



Vision 2- Features Description

Flexible hardware construction

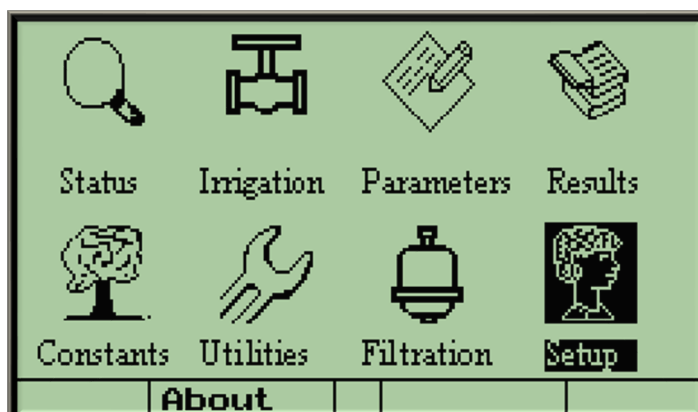
- Local outputs DC or AC constructed from boards of 16 outputs/ 8 inputs.
- Up to 64 outputs and 32 inputs connectable.
- Analogue inputs available in cards of 2 OR 4 to connect locally.

General features

- Handling multiple irrigation lines
- Flexible and user changeable network definition
- A large pool of irrigation programs, each program contains the sequence of participating valves, water and fertilizer dosage, operation timing and conditions
- Valves can be irrigated individually or in groups defined as library groups or single use groups
- Handling various water sources
- Cyclical irrigation with constant cycle of days or RUN LIST based. Cycles within the irrigation day, with large number of repetitions, intervals specified in hours: minutes: seconds.
- Irrigation by Soil Moisture, Rain Accumulation and Evapo-transpiration
- Flushing automatic filters by time and/or by pressure differential
- Conditions for starting, stopping, waiting and continuing programs, based on sensors' statuses, flow rates, states of system components etc. the conditions can be combined by AND/OR connections
- Detailed events report with date and time stamps, can be scanned by various categories
- System STOP TIME or individual stop time per program may force operation stop at a desired time
- Protection and alarming mechanisms detect problems in the irrigation system, in the water supply, in the fertilization system , in the filtration, and in the control system itself
- Optional satellite outputs and optional grouping of inputs
- Accumulation of water and fertilizers, including special accumulation of last irrigation
- Main valves operation- delayed, advanced or simultaneously with the irrigation valves
- Battery backup for the memory of the variable data
- Special tools for the dealer to enable / hide features according to the specific needs, to set up default values, to define the resources allocation

Comfortable programming

- Large graphical LCD with back illumination for good day and night visibility
- Full numeric keypad that serves also for direct jumping into important subjects
- Position dependent Function Keys
- Special keys for movement inside and between screens
- Built in bilingual software. Switching languages by a single key stroke

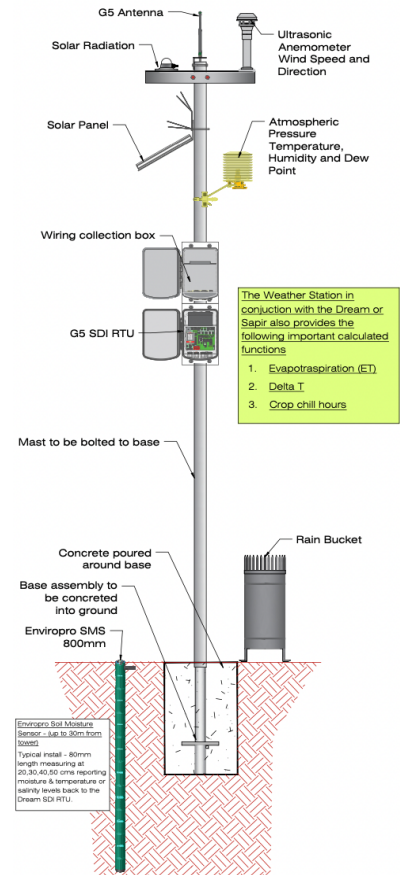


Weather Sensors

- The Weather Sensors features the following

Evapo-transpiration	Temperature
Solar Radiation	Humidity
Dew point	
Barometric Pressure	Wind Speed
Wind Direction	Daily Rain

- Rain delay feature with its own designated screen
 - Feature will suspend irrigation for a planned period dependent on accumulated rain period and planned number of rain days.
 - Email message will be triggered when rain delay is activated.
- Evapo-transpiration (ET) feature with its own designated screen
 - ET values automatically downloaded from weather station daily.
 - If ET feature selected then irrigation will be enabled based on ET value.
- Frost Protection feature with its own designated screen.
 - Frost protection will be enabled when critical plant temperature (user defined) is reached.
 - On activation of frost protection all other irrigation will be suspended.
 - Manual activation option.
 - Email message will be sent when temperature crosses a particular point and when frost protection is activated.



API

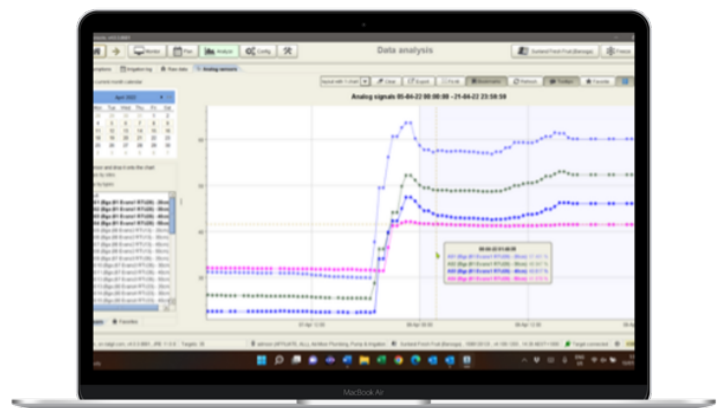
Goldtec's controllers are API enabled, allowing for the integration with a third-party service provider which collects data and/or translates into a functioning command.

Fertilization

- Handling two types of fertilization sites, local sites which serve individual irrigation lines, and central sites that serve multiple irrigation lines (6 per line)
- Fertilizing in three stages: pre-watering, fertigation and post- watering
- Continuous or proportional injection specified in the following terms:
 - litres of fertilizer per each cubic meter of water
 - seconds of fert per each minute of irrigation
 - sec:min of fert per each cubic meter of water
 - litres of fert per each minute of irrigation
 - proportion calculated from the division of the fert dosage by the water dosage
 - Bulk injection specified by time
 - Bulk injection specified by volume
- A special "water before" value for the first local fertilizer, separately from the other fertilizers
- Handling fertilizer injectors with and without fertilizer meters
- Handling booster pumps of Venturi injectors

Communication

- PC software, Java based-DREAM CONSOLE.
- Simple to use, powerful and modern.
- Smartphone application- DREAM SPOT.
- From any device on any application.
- Communication channels:
 - 4G modem, Ethernet cable.
- Email alarms OR phone push notifications.



Multi-sensors data analysis graph.



Website: [https://goldtecsystems.com. au/](https://goldtecsystems.com.au/)



Facebook: @Goldtec Control Systems



LinkedIn: @Goldtec Control Systems

